



LUCAS HNATH'S

A Doll's House  
*Part 2*



UNIVERSITY of WISCONSIN  
**GREEN BAY**

College of Arts, Humanities, and Social Sciences and  
Theatre and Dance  
*present*

# **A DOLL'S HOUSE, PART 2**

## **by Lucas Hnath**

### **CAST**

ANNE MARIE.....**ALYSSA HANNAM\***  
NORA.....**FAITH KLICK\***  
TORVALD.....**CORY J. O'DONNELL\***  
EMMY.....**CHAY AUSTYN SCHMITT\***

### **Where**

Norway. Inside the Helmer House.

### **When**

15 years since Nora left Torvald.

\*Indicates Theatre Scholarship Recipient 2019-2020

A DOLL'S HOUSE, PART 2 is presented by special arrangement with  
Dramatists Play Service, Inc., New York.

Originally produced on Broadway by Scott Rudin, Eli Bush,  
Joey Parnes, Sue Wagner, and John Johnson

Commissioned and first produced by South Coast Repertory  
A DOLL'S HOUSE, PART 2 benefited from a residency at New Dramatists

Live-streamed play reading performed for the  
CAHSS Virtual Conference, a showcase of student work

**May 7, 2020**

---

---

## PRODUCTION

Director.....Laura Riddle  
Dramaturg ..... Chay Austyn Schmitt  
Production Coordinator.....Amanda Wildenberg  
Technical Supervision..... Kate Farley  
Production Associate.....Rebecca Stone Thornberry  
Technical Advisor..... John Thornberry  
Administrative Assistant..... Tricia Adams  
University Communications Liaison.....Sue Bodilly  
Poster Design..... Strawberry Fields Design

### **College of Arts, Humanities, and Social Sciences**

Chuck Rybak, Dean

CAHSS Virtual Conference Project Supervisor

Ryan Martin

A DOLL'S HOUSE, PART 2

will be performed without intermission

approximate running time 90 minutes

Contains strong language

### **Special Thanks**

**1923 Fund**

**& Theatre First Nighters**

For your generous support

---

---

## DRAMATURG'S NOTES

Marriage equality. Gender equality. Human rights. These three phrases are often found on the front lines of socio-political battlefields. They're so common nowadays, that many people think these are new ideas developed by "social justice warriors" and "snowflakes". In reality, people have been arguing over these topics for hundreds of years.

Almost 200 years ago in Norway, Henrik Ibsen wrote *A Doll's House*, a play that would change the world. Nora, a housewife in a "perfect marriage" began to question her place in society. When she expresses her need to be free, her overbearing husband Torvald reprimands her for neglecting her maternal duties, declaring that she is a mother before all else. Nora decisively (and rightly) states that she is a person above all else, and walks out the door and leaves behind the life she knows.

That "door slam heard round the world" has been echoing for almost two centuries. Ibsen's words have not lost their edge, and continue to ring true today. But was Nora completely in the right when she left her family? Was Torvald the controlling husband we have always known? What are these characters afraid to confront? What consequences do their actions have? It is my hope that you challenge your biases, keep an open mind, and listen with intent to what these characters are saying, as well as what they're avoiding.

~Chay Austyn Schmitt

---

---

## ABOUT THE PLAYWRIGHT

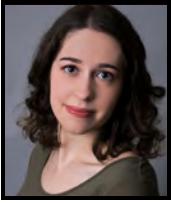
**LUCAS HNATH'S** plays include *Dana H.* (2019) and *The Thin Place* (2019), *The Christians* (2014 Humana Festival), *Red Speedo* (Studio Theatre, DC), *A Public Reading of an Unproduced Screenplay About the Death of Walt Disney* (Soho Rep), *NIGHTNIGHT* (2013 Humana Festival), *Isaac's Eye* (Ensemble Studio Theatre), *Death Tax* (2012 Humana Festival, Royal Court Theatre), and *The Courtship of Anna Nicole Smith* (Actors Theatre of Louisville). His plays are published by Dramatists Play Service. Lucas has been a resident playwright at New Dramatists since 2011, and is a proud member of the Ensemble Studio Theatre. Hnath is a winner of the 2012 Whiffield Cook Award for *Isaac's Eye* and received a 2013 Steinberg/ATCA New Play Award Citation for *Death Tax*.

Hnath holds a BFA and an MFA from New York University's Department of Dramatic Writing. He is originally from Orlando, Florida, just five minutes away from Orlando Studios. Hnath's childhood home was a geodesic dome. He originally intended to attend college for pre-med (akin to Henrik Ibsen's intention to become a doctor). His writing style has been largely influenced by the absurdists, and the false, theatrical nature of Orlando.

---

---

## ABOUT THE CAST



### **Alyssa Hannam (Anne Marie)**

Originally from Fort Atkinson, Wisconsin, Alyssa is a graduate of Fort Atkinson High School. At UW-Green Bay, she is a double major in Musical Theatre and Creative Writing where she has appeared onstage as Sherry and Dr. Toros in *Mary Jane*, Portia and a Soldier in *Julius Caesar*, Sister Mary Brendan in *Nunsense the Mega Musical*, Ellen in *The Night Thoreau Spent in Jail* (staged reading), and Delta Nu in *Legally Blonde*. She has also performed as a dancer in *DanceWorks* in 2017 and 2018. She previously appeared as Nightingale in *Once Upon a Mattress*.



### **Faith Klick (Nora)**

Faith is a senior at UW-Green Bay studying Musical Theatre and English Literature. She will graduate in December. Faith is from Wild Rose, Wisconsin, and attended Wild Rose High School. At UWGB, she appeared as Juliet in *Searching for Romeo*, in the ensemble of *I Never Saw Another Butterfly*, Brooke Wyndham in *Legally Blonde*, Cass Harris in *Wonder of the World*, Sister Mary Amnesia in *Nunsense*, Brutus in *Julius Caesar*, and Janet in *The Rocky Horror Show*. Professionally, she played Missy in *The Marvelous Wonderettes*, Slovitich in *Fools*, and Chick in *Crimes of the Heart* at St. Croix Festival Theatre.



### **Cory J. O'Donnell (Torvald)**

Cory is currently a sophomore at UW-Green Bay studying Musical Theatre. He is originally from Waukesha, Wisconsin where he attended Waukesha North High School. At UWGB, he has appeared onstage as Caesar's Servant and a Soldier in *Julius Caesar*, and as Brad Majors in *The Rocky Horror Show*. He has appeared several times with the Waukesha Civic Theatre in the Christmas variety show *Candy Cane Tales and Holiday Carols*. He has worked as an assistant directing intern for Footloose at the Sudbrink Performance Academy.



### **Chay Austyn Schmitt (Emmy, Dramaturg)**

Chay is a senior Theatre Studies major at UW-Green Bay, and attended Richland Center High School in Richland Center, Wisconsin. At UWGB, Chay has performed in *The Rocky Horror Show* (Usherette, Transylvanian), *Julius Caesar* (Casca, Soldier), *DanceWorks* (Rhythm Tap – LEMON), *Women Playing Hamlet* (Ensemble), *Nunsense* (Sister Mary Leo), and *Legally Blonde* (Ensemble). Chay has also participated in a number of special projects, including readings of *Ragdoll* and *Vashon* (original plays by Alyssa Hannam), and *The Night Thoreau Spent in Jail*, (a staged reading with the UWGB Social Justice Theatre). In Richland Center, Chay was recently seen in *The Unexpected Man* (The Woman), and *And Then There Were None* (Vera Elizabeth Claythorne).